

From Edentulous Maxilla To Fixed Teeth With *Camlog®* *Guide System* And Cad /Cam ISUS Bridge Case Report

Objectives

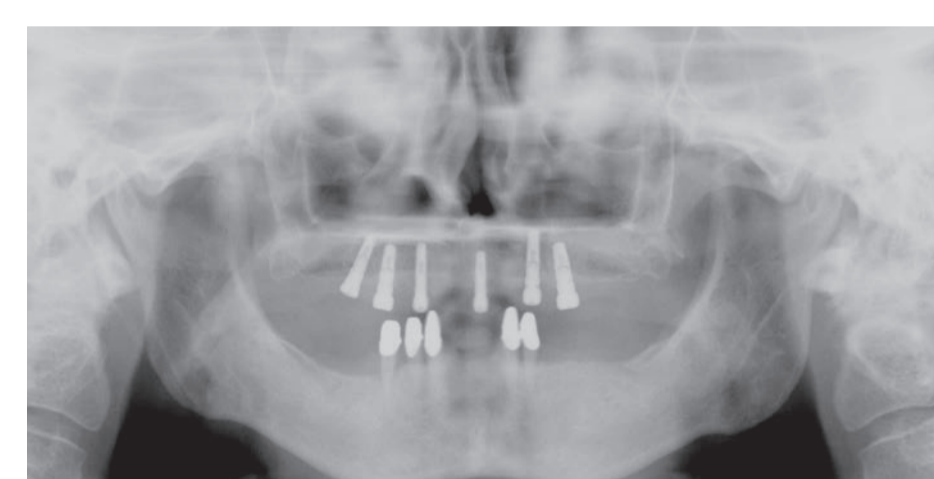
At a 54 year old female patient all the teeth had been removed in the upper jaw. The teeth were pre-damaged periodontal and caries and no longer worthy of preservation. After four months of regeneration, navigated planning with Materialise SimPlant was prepared on a CT record.



Before Treatment



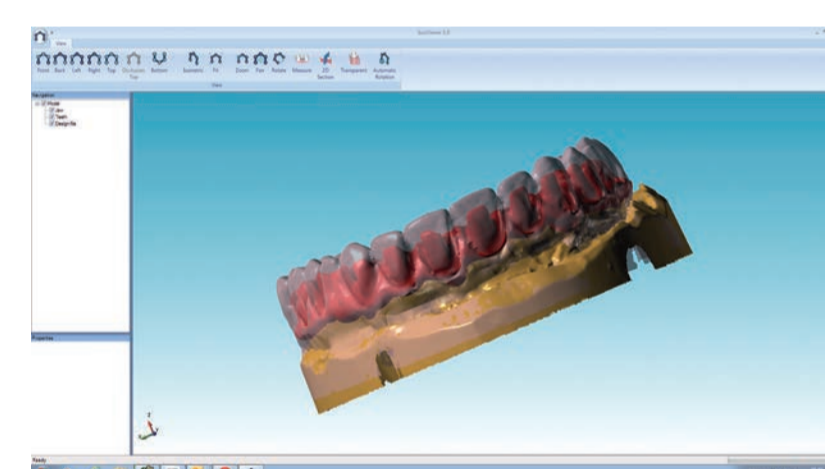
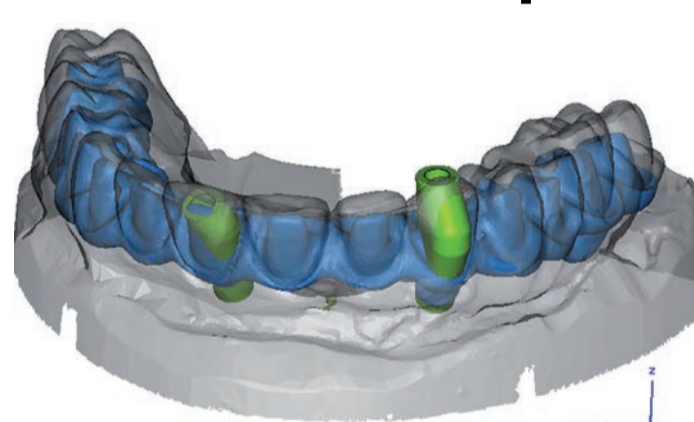
3 months later



6 weeks after impl.

Materials and methods

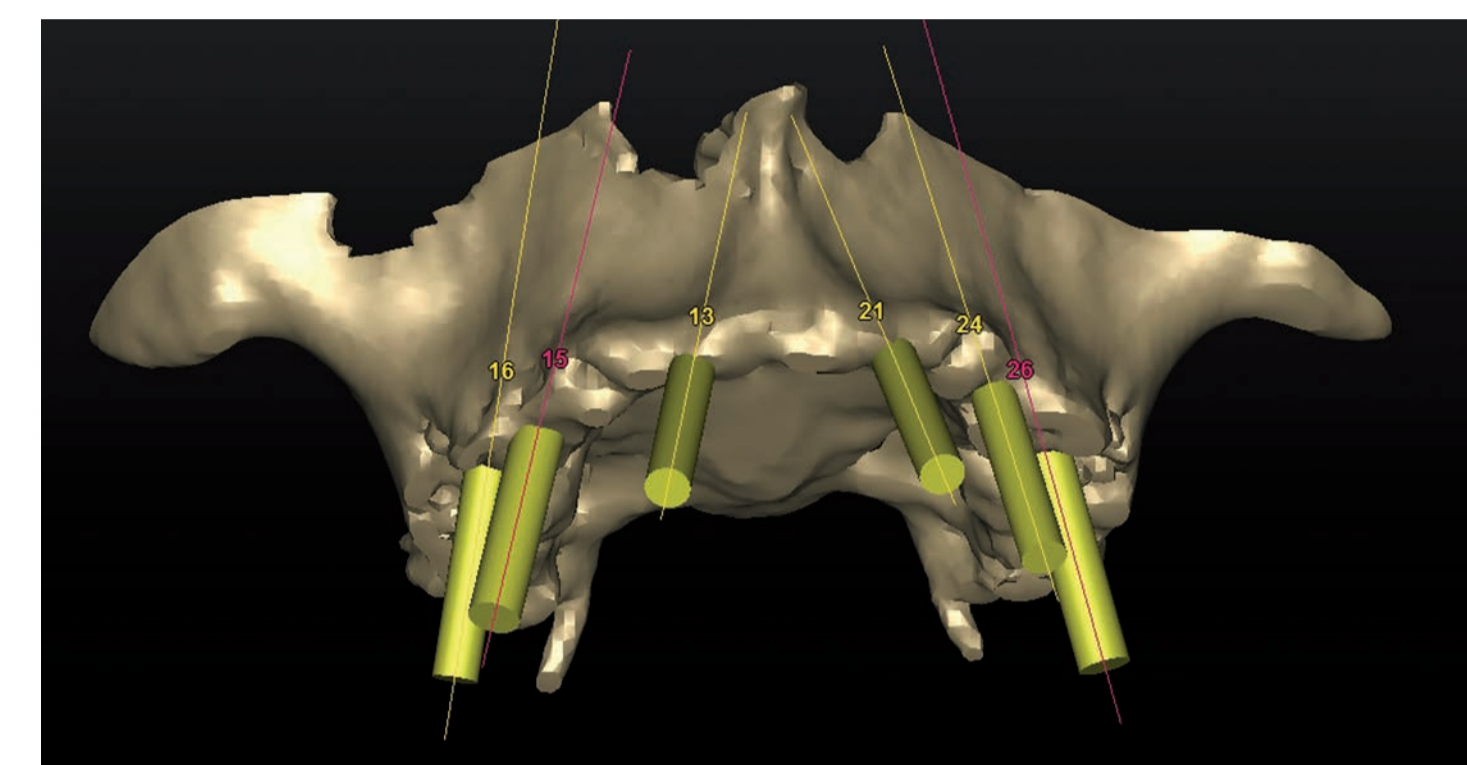
Manufacture of the final prosthetic
Taking an impression with custom tray and prior blocking of the impression post.
In the second session, a provisionally bite registration was taken with screw base.
An Esthetic restoration had been prepared after a determination relation, following the fitting for the electronic functional diagnosis (Freecoder Blue Fox® System) related to the hinge axis, joint space measurement and registration of the movement path.



After evaluation the FAL-data repositioning has been made under computer control. The CAD CAM manufactured ISUS bridge made of grade 4 titanium includes angled screws. Therefore we could make sure that the screw holes are located on an occlusal position and not in the esthetic zone. Anterior have been used e.max crowns and posterior composite veneers from GC Gradia.

Results

The patient request of fixed teeth ended up in a conditionally removable hybrid bridge.



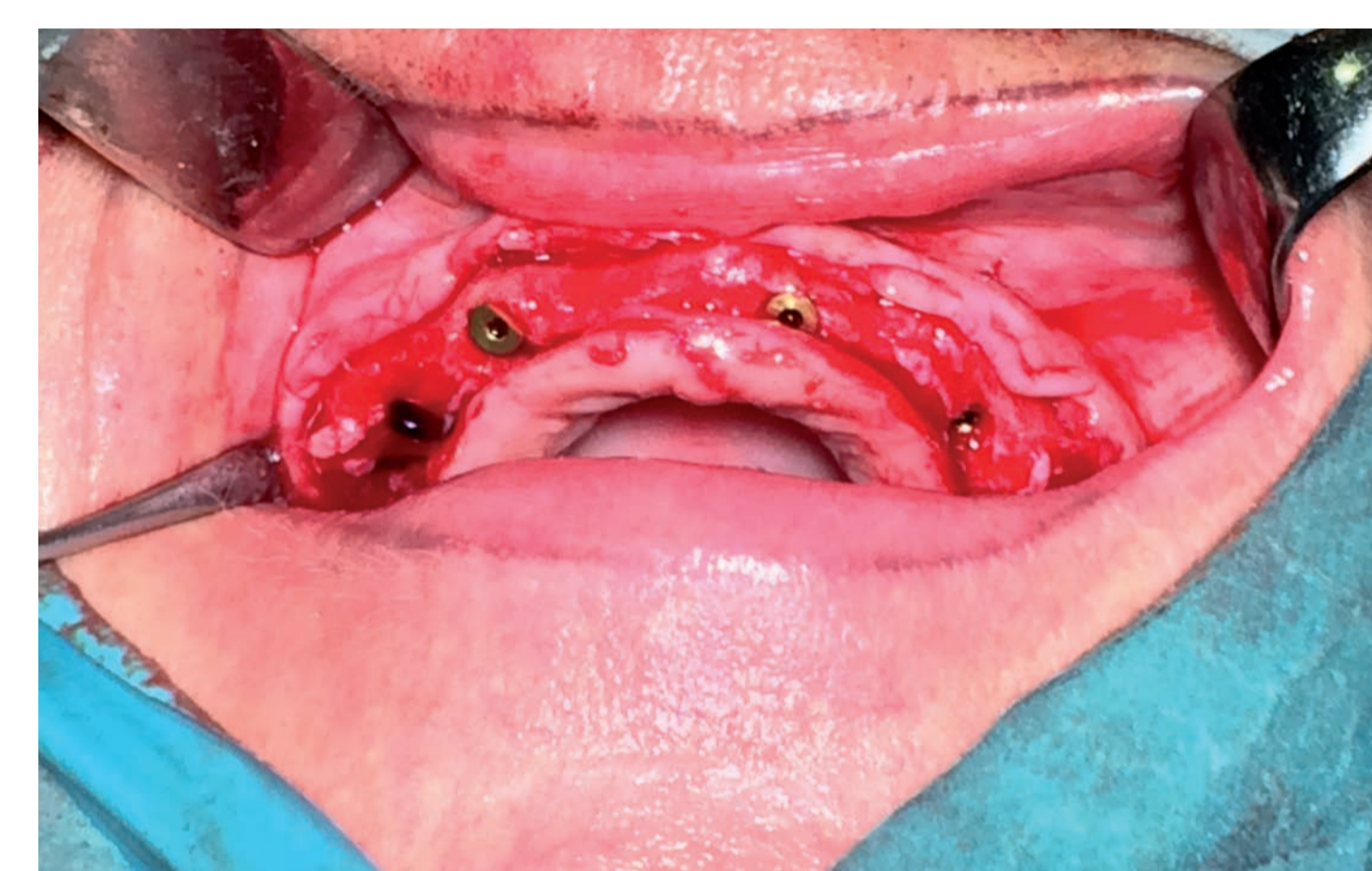
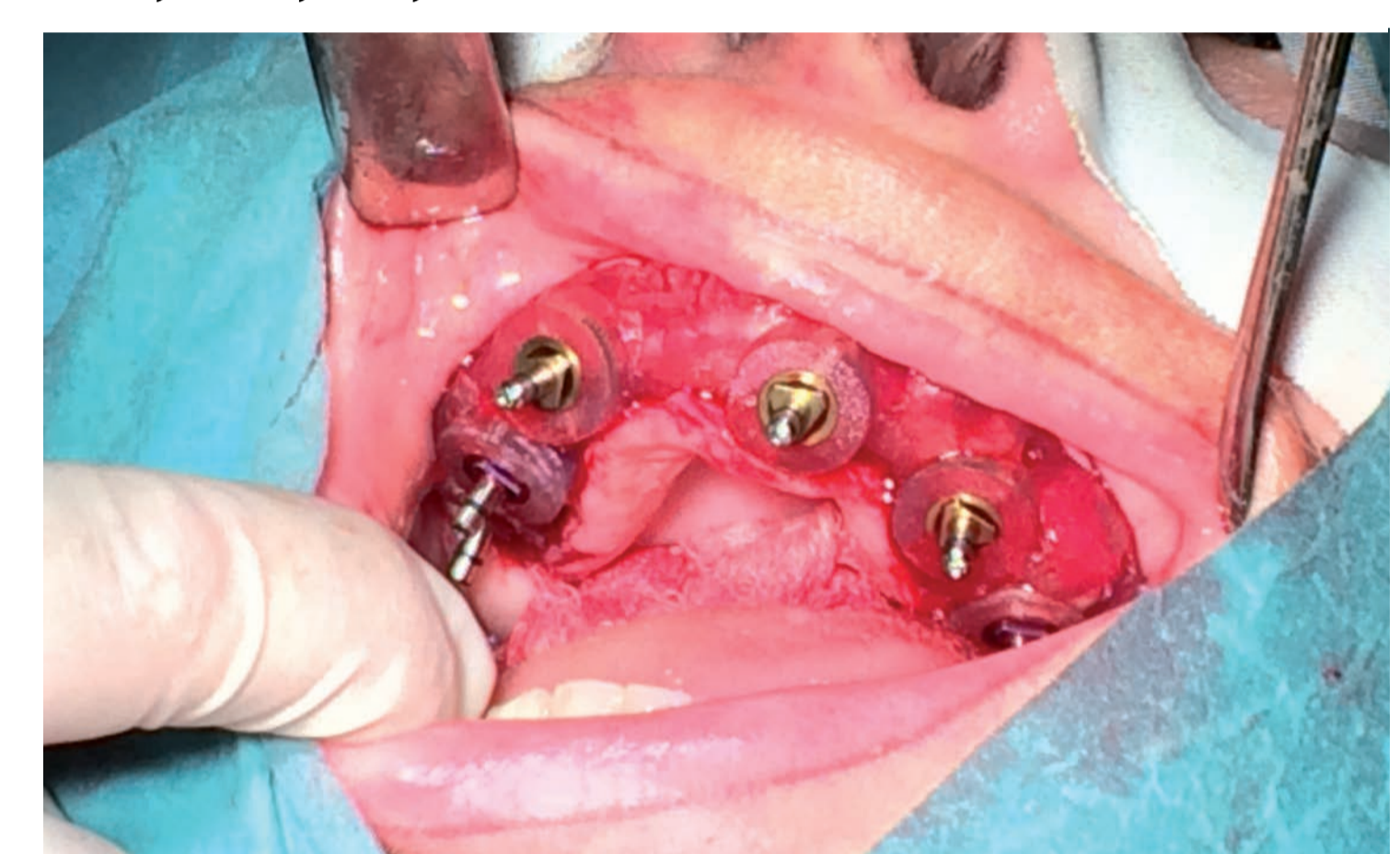
Planing with SimPlant®



13,24 3,8x13 - 16,21 3.8x11
15,26, 4,3x11



The Camlog® Guide System fitting and fixing on bone



after removing Guide System



a. 5 months imp. p. open tray



CAD/CAM manufactured ISUS bridge



The red and white aesthetic was achieved by an individual multi-colored gingiva composite design.