

## PRELIMINARY RESULTS OF CAMLOG IMPLANTS IN THE AESTHETIC ZONE: CLINICAL AND RADIOLOGICAL EVALUATION

**KAHRAMANOĞLU E<sup>a</sup>, VANLIOĞLU B<sup>b</sup>, ÖZKAN Y<sup>c</sup>, KULAK-ÖZKAN Y<sup>d</sup>**

<sup>a</sup> Research Assistant, Department of Prosthodontics, Faculty of Dentistry, University of Marmara, Istanbul, Turkey

<sup>b</sup> Associate Professor, Department of Prosthodontics, Faculty of Dentistry, University of Marmara, Istanbul, Turkey

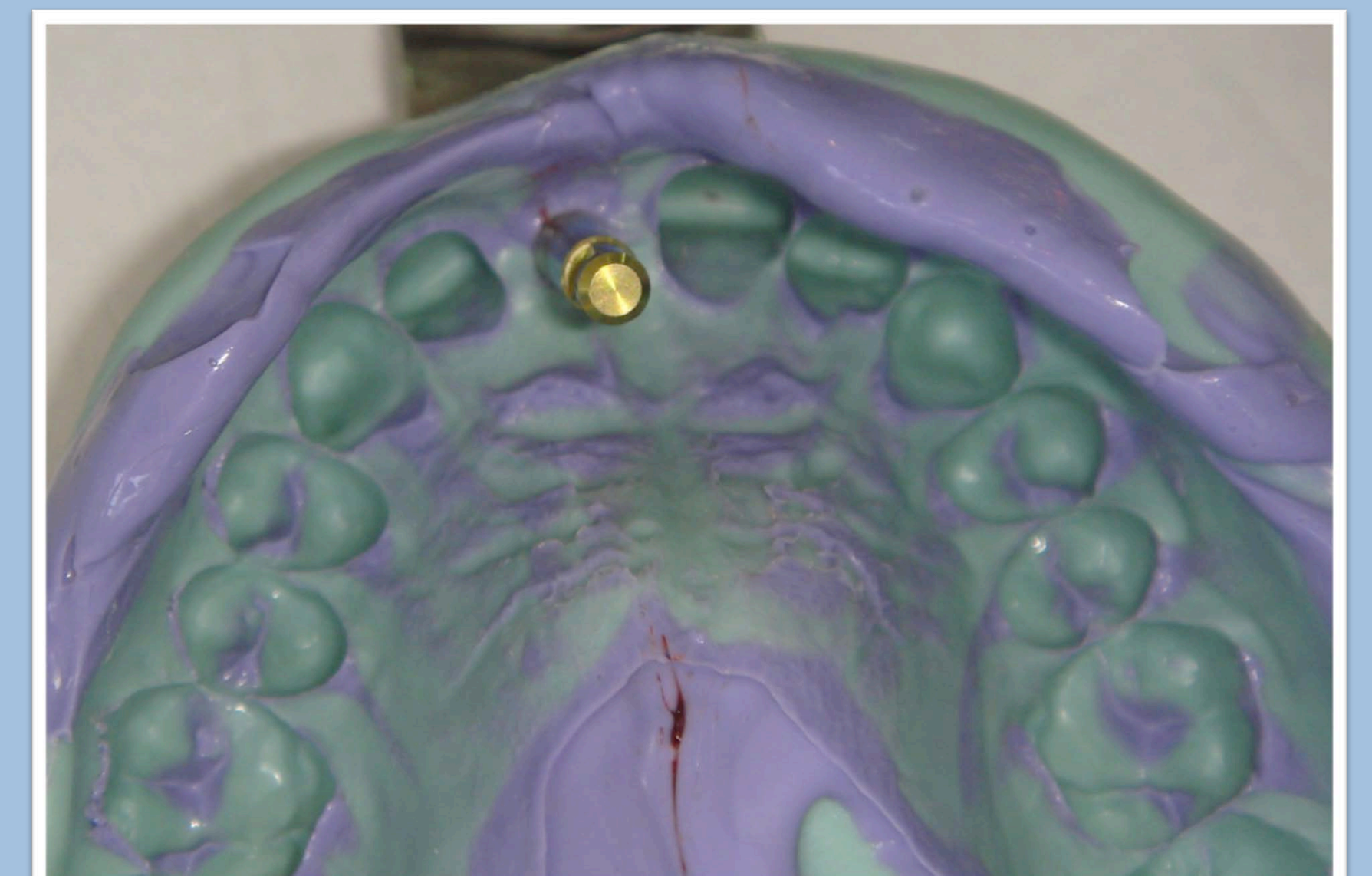
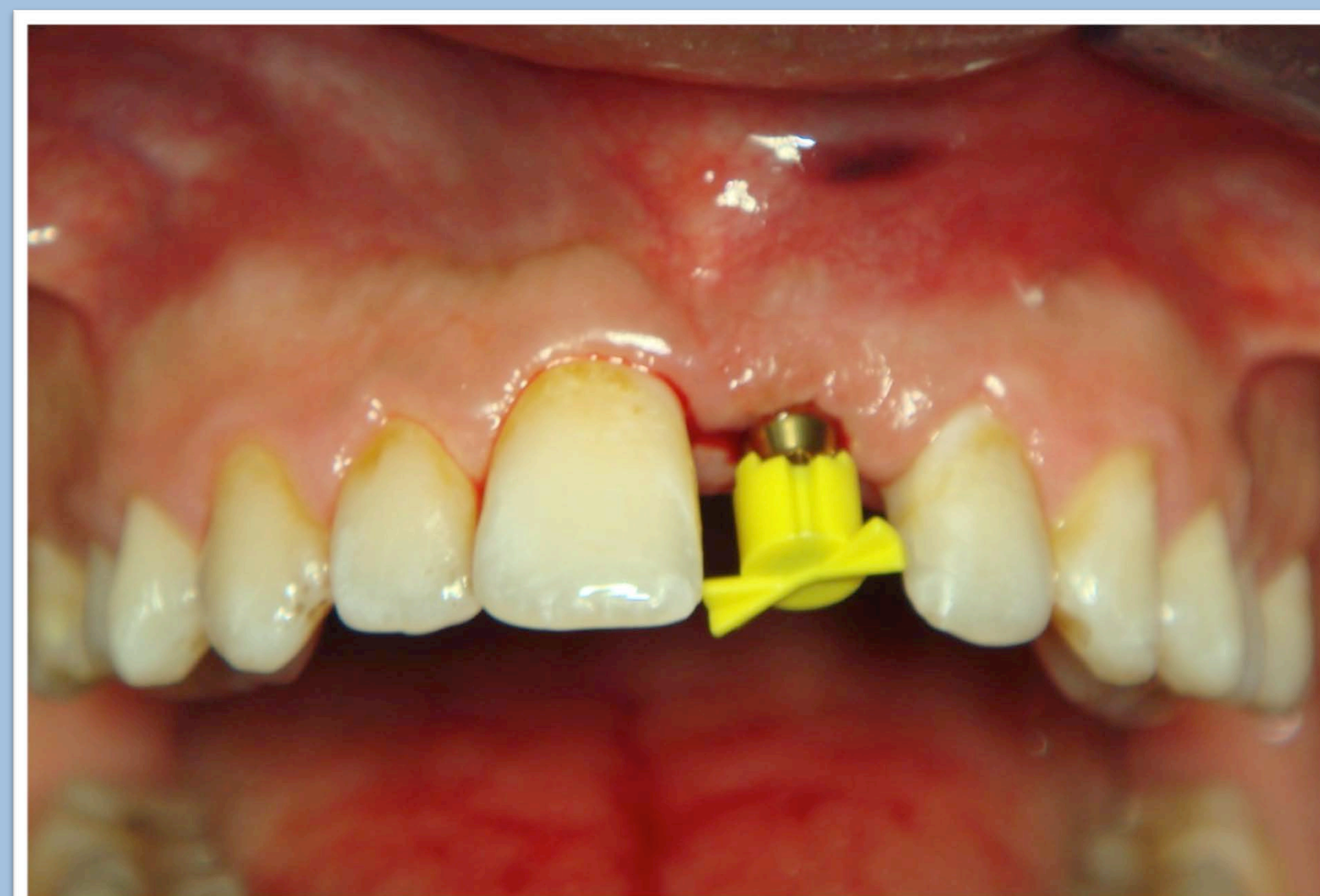
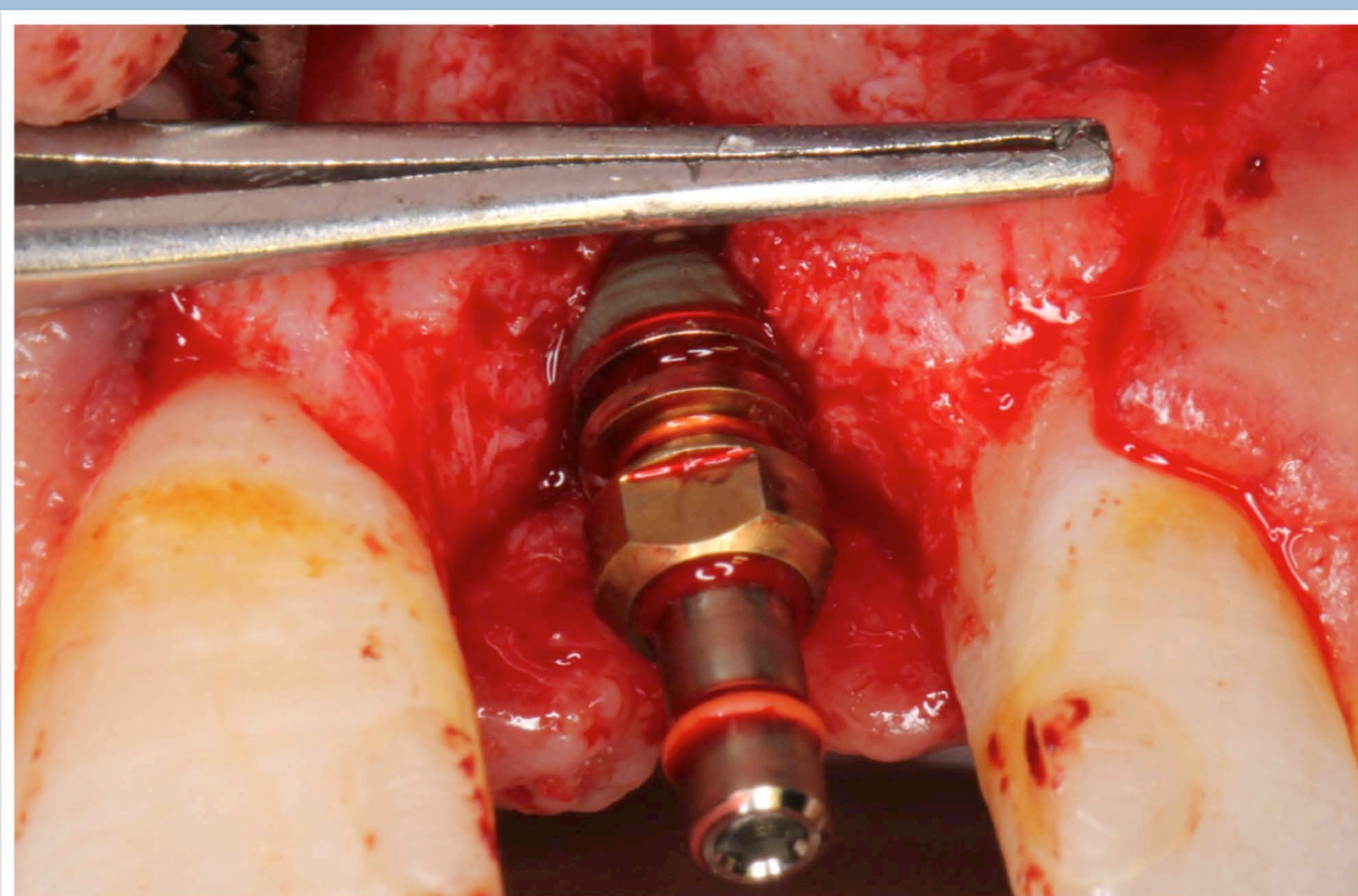
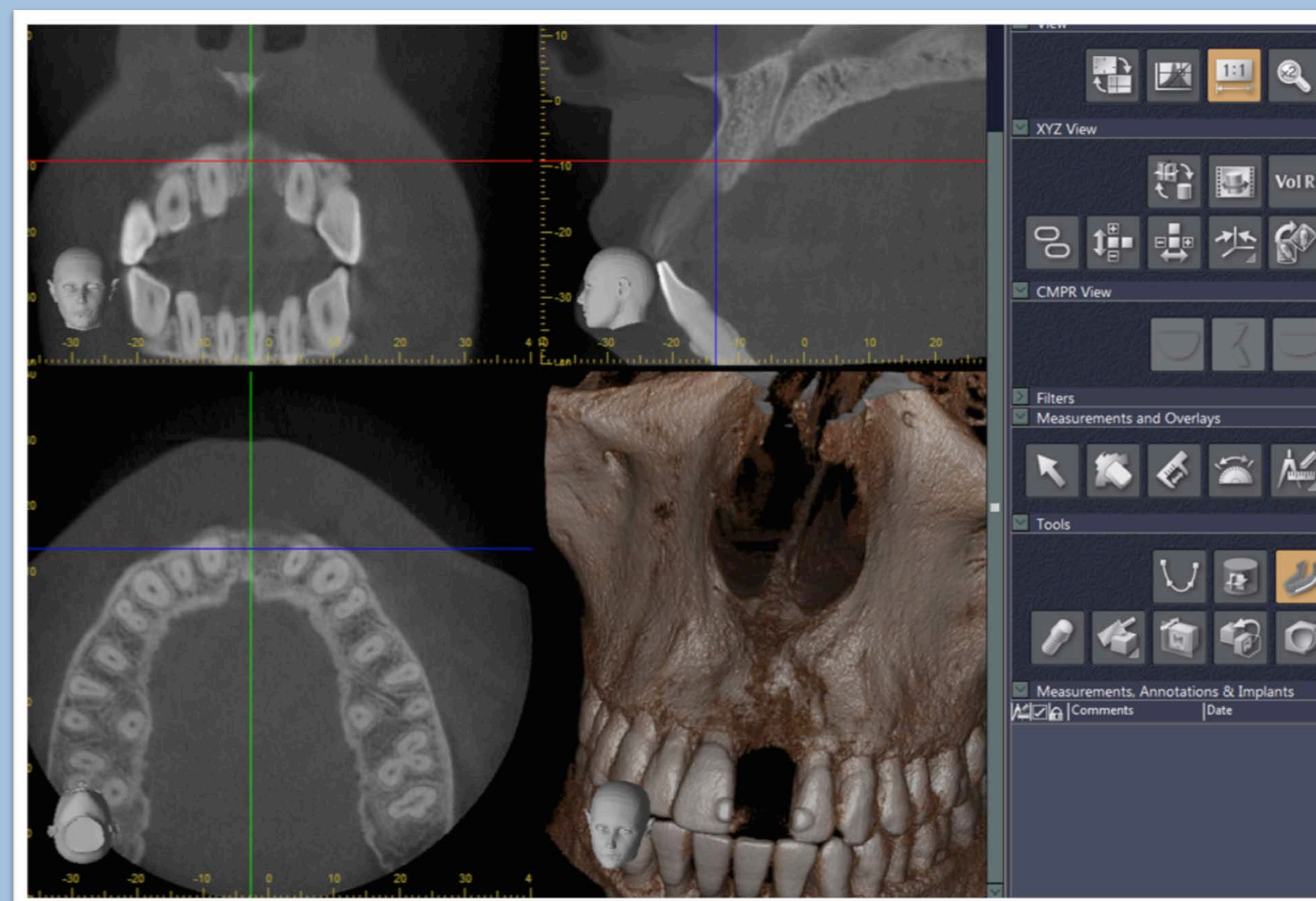
<sup>c</sup> Professor, Department of Oral Surgery, Faculty of Dentistry, University of Marmara, Istanbul, Turkey

<sup>d</sup> Professor and Head of Department, Prosthodontics, Faculty of Dentistry, University of Marmara, Istanbul, Turkey

**Objectives:** The aim of this study was to prospectively assess clinical and radiological results in a group of patients treated with Camlog implants supporting mostly single-tooth, and partial restorations.

**Material and Methods:** In this study, patients were treated with implant (Camlog Biotechnologies, Basel, Switzerland) supported all ceramic single crowns and followed for 1 year. The implants were evaluated by clinical and radiographic parameters. Clinical parameters like plaque index (PI), sulcus bleeding index (BI), peri-implant probing depth (PD), and marginal bone loss (MBL) were recorded. Repeated-measurement ANOVA, Kruskal-Wallis test, Wilcoxon signed rank test and paired samples test were used for statistical analysis.

**Results:** Twenty-four implants were placed in 20 patients. At the recall examinations, all implants were successfully integrated, demonstrating healthy peri-implant soft tissues as documented by standard clinical parameters. The mean MBL at baseline was 0,98 mm  $\pm$  0,51 at mesial side; 0,88 mm  $\pm$  0,40 at distal side. The MBL reached to 1,24 mm  $\pm$  0,58 at mesial; 1,11 mm  $\pm$  0,46 at distal side at 1 year. The difference was statistically insignificant. Soft tissues were clinically healthy. The mean PD at baseline was 2,95 mm  $\pm$  0,59 and increased to 3,19 mm  $\pm$  0,77 at 1 year but the difference was statistically insignificant (Table 1-2).



Baseline

1.year

Table 1: The mean marginal bone loss value

Time	Mean	Sd
Baseline Mesial	0,98	0,51
Baseline Distal	0,88	0,40
6 months mesial	1,14	0,58
6 months distal	1,01	0,42
1 year mesial	1,22	0,67
1 year distal	1,10	0,54

Table 2: The mean probing depth value

Time	Mean	Sd
Baseline	2,91	0,58
6 months	3,08	0,72
1 year	3,00	0,63

**Conclusion:** Camlog implants in the anterior zone reveal successful clinical and radiographic outcomes when ideal treatment steps are performed.

**Address:** Ms. Prof. Dr. Yasemin Kulak Özkan  
Head of Department, Department of Prosthodontics  
Marmara University Faculty of Dentistry, İstanbul, Turkey,  
+902122319120  
ykozkan@marmara.edu.tr