

Immediate Implants & Immediate Prostheses. A Guided Surgery Approach in the Anterior Maxilla.

Antonio Meaños Somoza, Inmaculada González, Pablo Gómez Cogolludo, Alberto Ortiz-Vigón, Guillermo Pradiés, Ignacio Sanz Sánchez.
Máster Odontología Restauradora basada en Nuevas Tecnologías.

Introduction & Purpose:

Guided surgery has been indicated for the optimization of implant placement in critical aesthetic cases and for immediate loading with prefabricated restorations.

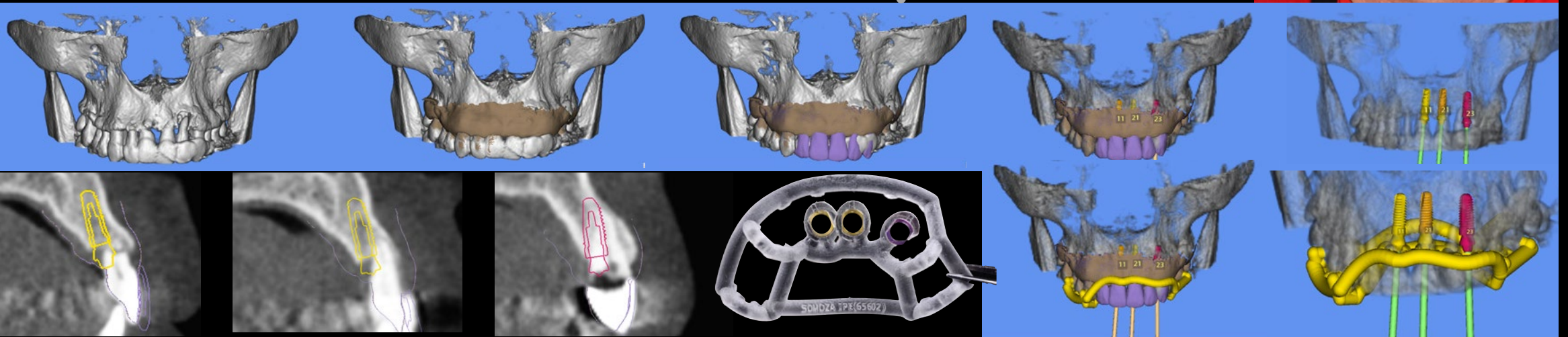
The aim of this case report is to present the advantages of digital dentistry in the diagnosis, planning and execution of restorative and implant therapy

Material & Methods

Baseline

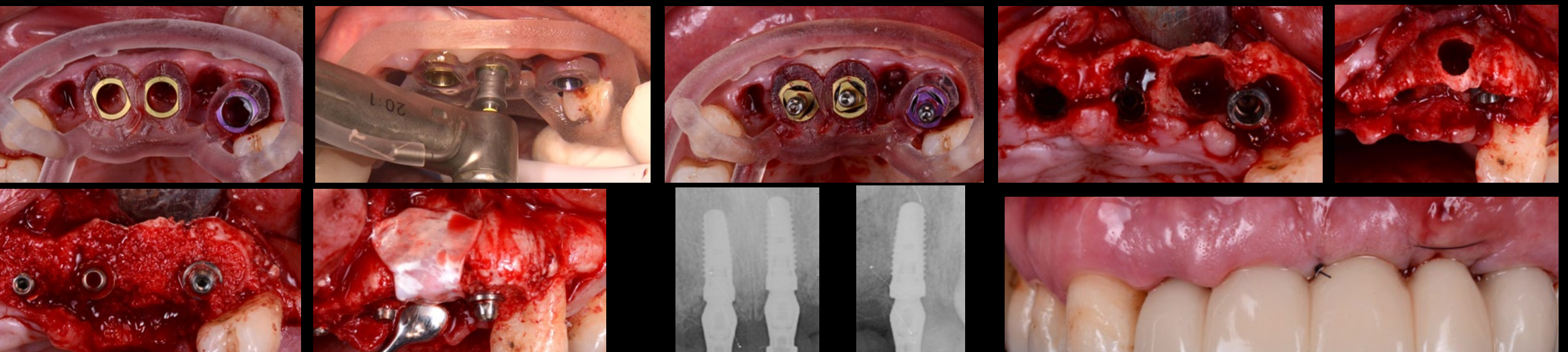


Digital Implant Planning

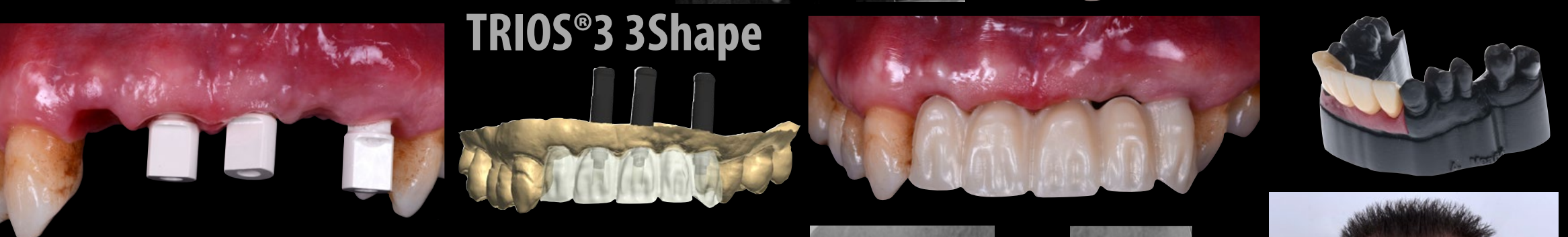


Guide Surgery , GBR, Immediate Prostheses

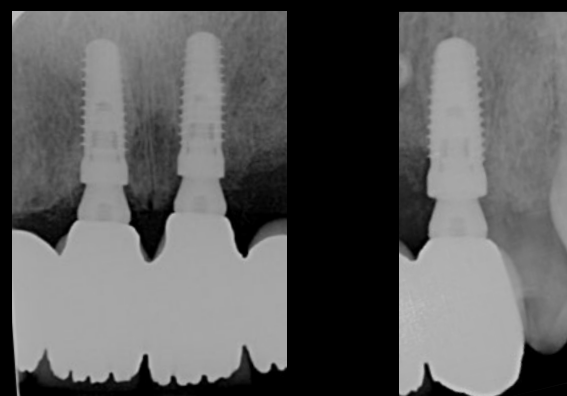
CONELOG®



Final Restoration



Results



Conclusions:

Computer assisted implant planning and static guided surgery may offer clear advantages, such as the accuracy of implant placement, the reduction of surgical time and the optimization of aesthetics.