



ORAL RECONSTRUCTION
FOUNDATION



|
2
|
CE CREDITS

Crestal Approaches for Implant Placement & Sinus Augmentation

SEPTEMBER 18, 2018 | **DR. MICHAEL BLOCK**

FOUR SEASONS RESORT
AND CLUB DALLAS AT
LAS COLINAS, IRVING, TX

Crestal Approaches for Implant Placement & Sinus Augmentation

PRESENTED BY DR. MICHAEL BLOCK

FOUR SEASONS RESORT AND CLUB DALLAS AT LAS COLINAS, IRVING, TX

At this course the attendees will be given a step by step description of how to handle sinus augmentations, from a crestal approach, for sinus floor thicknesses that are less than 3 mm, 4 to 6 mm, and greater than 7 mm. The lecture will include patient selection criteria, preoperative planning, a thorough description of the use of drills with stops, navigation systems, and the use of crestal window approaches. Video of the techniques will be shown to illustrate the relatively simple and minimally invasive technique. In addition, the techniques for simultaneous sinus augmentation with implant placement will be shown.

This approach minimizes the need for lateral window approaches, which can result in patient post-operative conditions that limit their ability to return to work. The crestal approach patients usually use non-narcotic pain medication and return to work the next day.



Michael Block DMD
Oral Maxillofacial Surgeon

SEPTEMBER 18, 2018

6:30pm-7:00pm Cocktail Hour

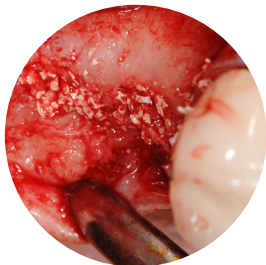
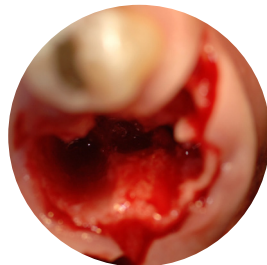
7:00pm-9:00pm Lecture / Dinner

2 CE Credit Hours

Tuition \$125

Register by September 4, 2018

REGISTER ONLINE at
www.regonline.com/crestal
or contact 205.986.7989



NONPROFIT ORG
US Postage
Paid
Birmingham, AL
Permit No. 915



Oral Reconstruction Foundation
2300 Riverchase Center
Birmingham, AL 35244



2 CE Credit Hours

Approved PACE Program Provider FAGD/MAGD credit. Approval does not imply acceptance by a state or provincial board of dentistry or AGD endorsement. 6/1/2016 to 5/31/2020. Provider ID# 219038.

ORF1319 REV A MAY 2018