

Title: Endo Scorpio Sinus Lift (ESSL) in repair case.

Author: Tetsuya Maejima D.D.S

Medical institute of EHD in Shibuya Tokyo. Japan.

e-mail: maeji3@me.com

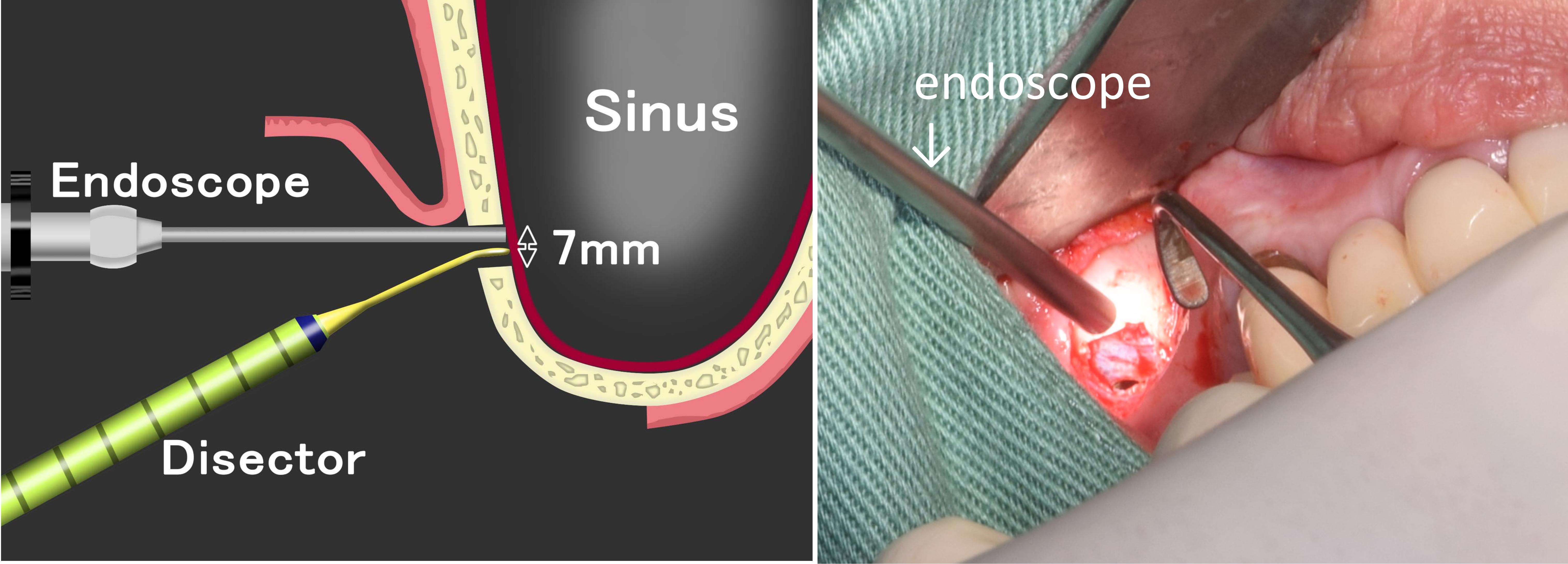


fig1

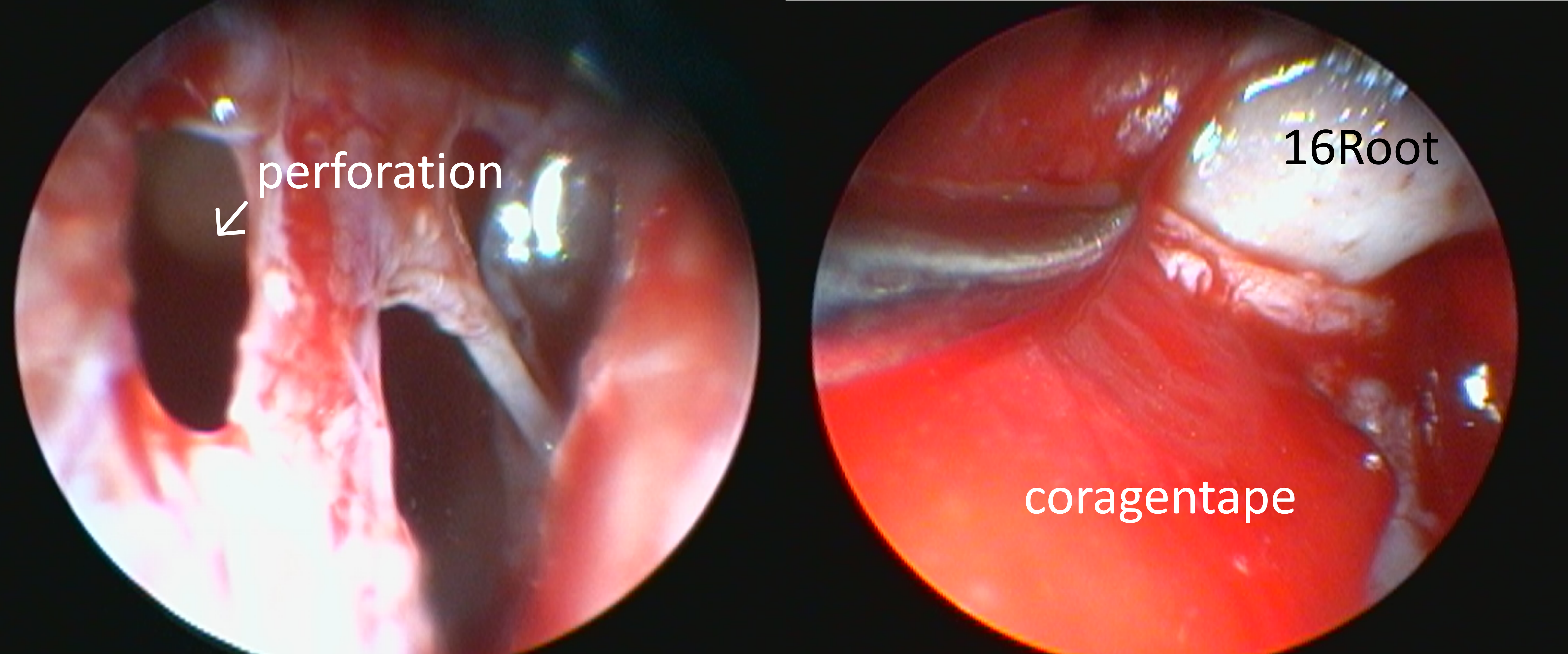
Aim:

Using endoscope, we are trying to do sinus augmentation by seeing monitor. We call this method Endo-Scopic-Sinus-Lift (ESSL). We have succeeded in observing real time maxillary sinus membrane augmentation from maxillary bone.

We did sinus augmentation in 16 implant in surgery. In doing surge, we accidentally perforated maxillary sinus membrane. Using endo scope (KARL STORZ, ϕ 2.7mm), we could repair maxillary sinus membrane with comaeragen tape, and did sinus augmentation by monitor of endo scope. Usually sinus lift is done blindly without seeing in deep part of maxillary sinus. All of us dentist could not see real time and deep part of a sinus cavity. **(fig1)**

This method helps us elevate sinus membrane safely by using the camera. Even if we accidental perforate sinus membrane, we can repair the membrane certainly and safely with seeing endoscope monitor. **(fig2)**

fig2



Materials and methods:

We open small lateral window (ϕ 7mm- ϕ 10mm diameter) in right maxillary bone with Piezo surgery. Putting in endoscope camera (KARL STORZ, ϕ 2.7mm) and rise sinus membrane with seeing endoscope monitor. Putting camera into deep side of sinus, at the same time, lifting membrane.

Results:

We could do sinus augmentation surgery more quicker and safer, and could repair accidental perforation of sinus membrane. **(fig3)**

Because we understood the real state of sinus membrane and structure by endoscope camera. Endoscope allow us to do advanced sinus augmentation, because we can see the sinus. Now we can see deep inside of sinus and more understanding sinus structure. We can surge more quicker and safer using endoscope camera. But we should be needed more training and experience of using endoscope camera.



fig3