



IMMEDIATE IMPLANT PLACEMENT WITH IMMEDIATE RESTORATION IN MAXILLARY AESTHETIC ZONE: A CASE REPORT



DR. RADHIKA MAHARJAN; Post Graduate Resident [PGY3] Department of Prosthodontics; B.P. Koirala Institute of Health Sciences, Nepal
Correspondence: radhikabpkis@gmail.com

INTRODUCTION

This case describes immediate implant supported prosthetic rehabilitation of mobile and discolored over-retained deciduous right maxillary canine.

The protocol followed was ITI 1B Protocol: Immediate Placement with Early Loading

CASE PRESENTATION

Patient: 34 years / female ; Faculty of Nursing Department
Presented with retained deciduous maxillary canine on the right side. Discolored and grade 2 mobile. R/G: No periapical abnormalities or bone loss
C/C: The patient wanted immediate fixed restoration
Treatment plan: Immediate Implant Placement with Non- functional Loading
13mm X 3 mm [AB Dental Implant System] conical was selected

DISCUSSION

In this case, overall bone density D2, thick gingival biotype, intact buccal plate¹ and the area being at aesthetic zone; Immediate placement of implant with immediate non functional loading was planned and executed accordingly.

Immediate implants placed in fresh extraction sockets are proven, predictable and evidence-based treatment modality that offers certain benefits to patients. Ribeiro et al² reported immediate nonfunctional loading of immediate placed implants had a relatively high success rate (93.5%)



Fig.1 Initial Case Presentation (discolored mobile retained deciduous canine) indicated for extraction



Fig.1A CBCT & OPG of concerned area



Fig.2 Socket after Atraumatic extraction

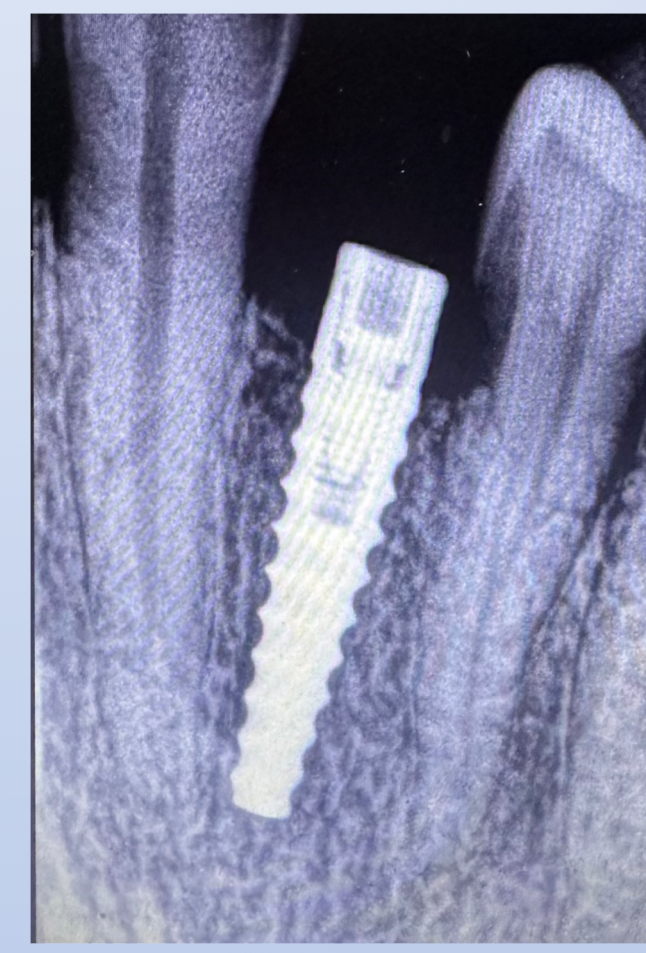


Fig.3 IOPAR of Implant placed



Fig.4 Implant In-Situ

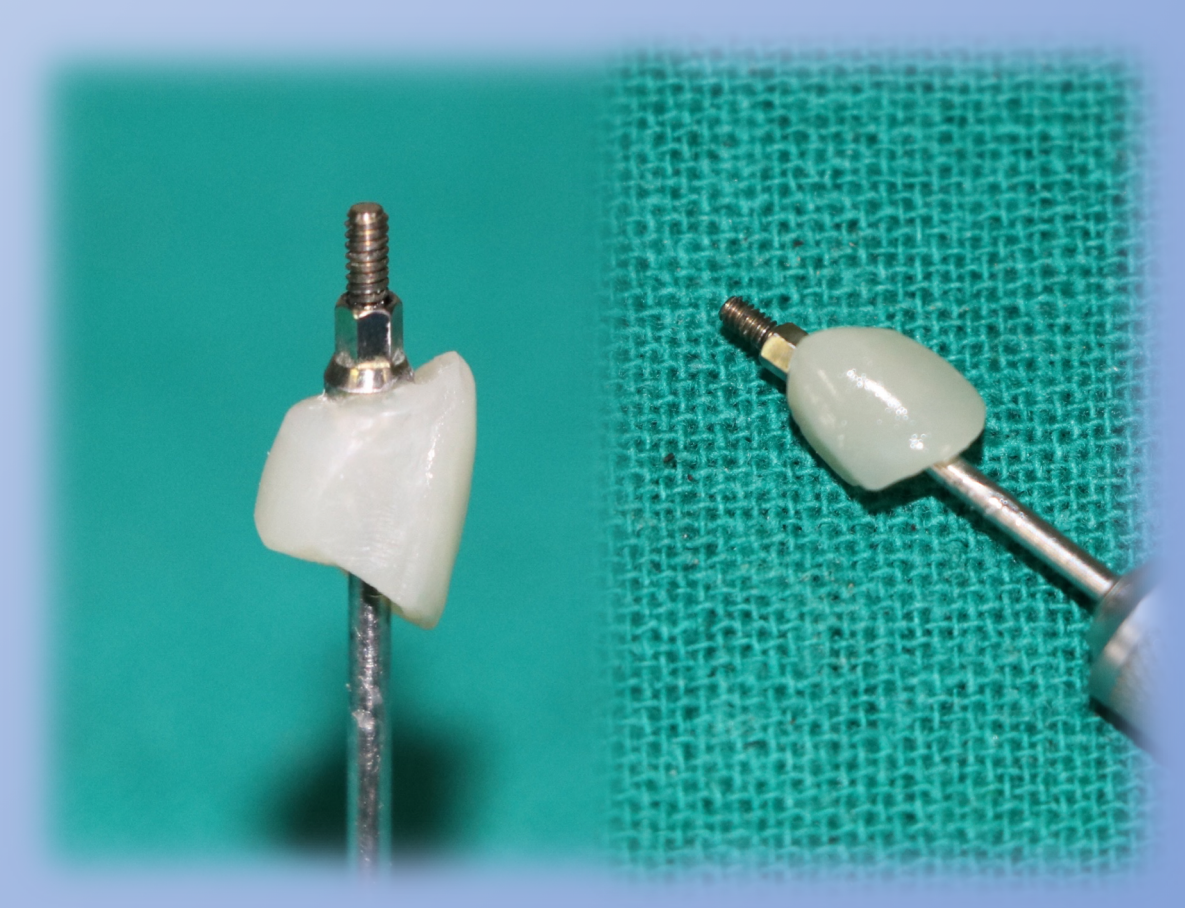


Fig.5 Provisional screw retained crown Chair side made



Fig.6 Immediate non functional restoration with screw retained provisional crown



Fig.7 Final implant supported crown restoration in place

CONCLUSION

Careful case selection, diagnosis and treatment planning along with meticulous extraction of the tooth along with good primary stability is the paramount in achieving success of immediate implants.

REFERENCES

1. Koh RU, Rudek I, Wang HL. Immediate implant placement: positives and negatives. *Implant Dent.* 2010 Apr;19(2):98-108. doi: 10.1097/ID.0b013e3181d47eaf. PMID: 20386212.
2. Ribeiro FS, Pontes AE, Marcantonio E, et al. Success rate of immediate nonfunctional loaded single-tooth implants: Immediate versus delayed implantation. *Implant Dent.* 2008;17:109-117.